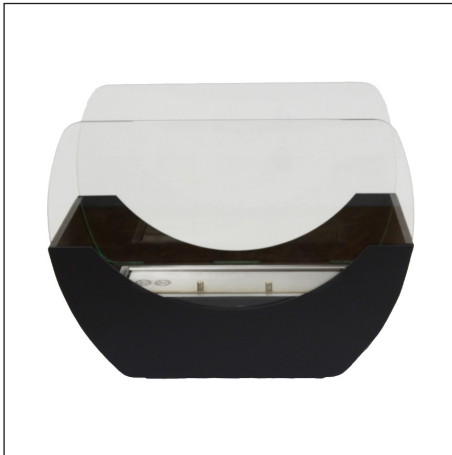


BIO-20-265

Cradle Bioethanol Fireplace



Picture



Technical Specifications

Fireplace type	Tabletop bioethanol fireplace
Fuel	Bioethanol, max. 96.6% alcohol
Weight	5.5 kg
Materials	Steel and Glass
Size	Height: 300 x Width: 400 x Depth: 200 mm
Colour	Black
Burner type	Manual
Capacity	1 liter
Adjustable flame	Yes
Burn time	Up to 3 hours
Requires electricity	No
Heat effect	1.5 kW/h